

STANDARD ARRIVAL CHART
INSTRUMENT(STAR) - ICAO

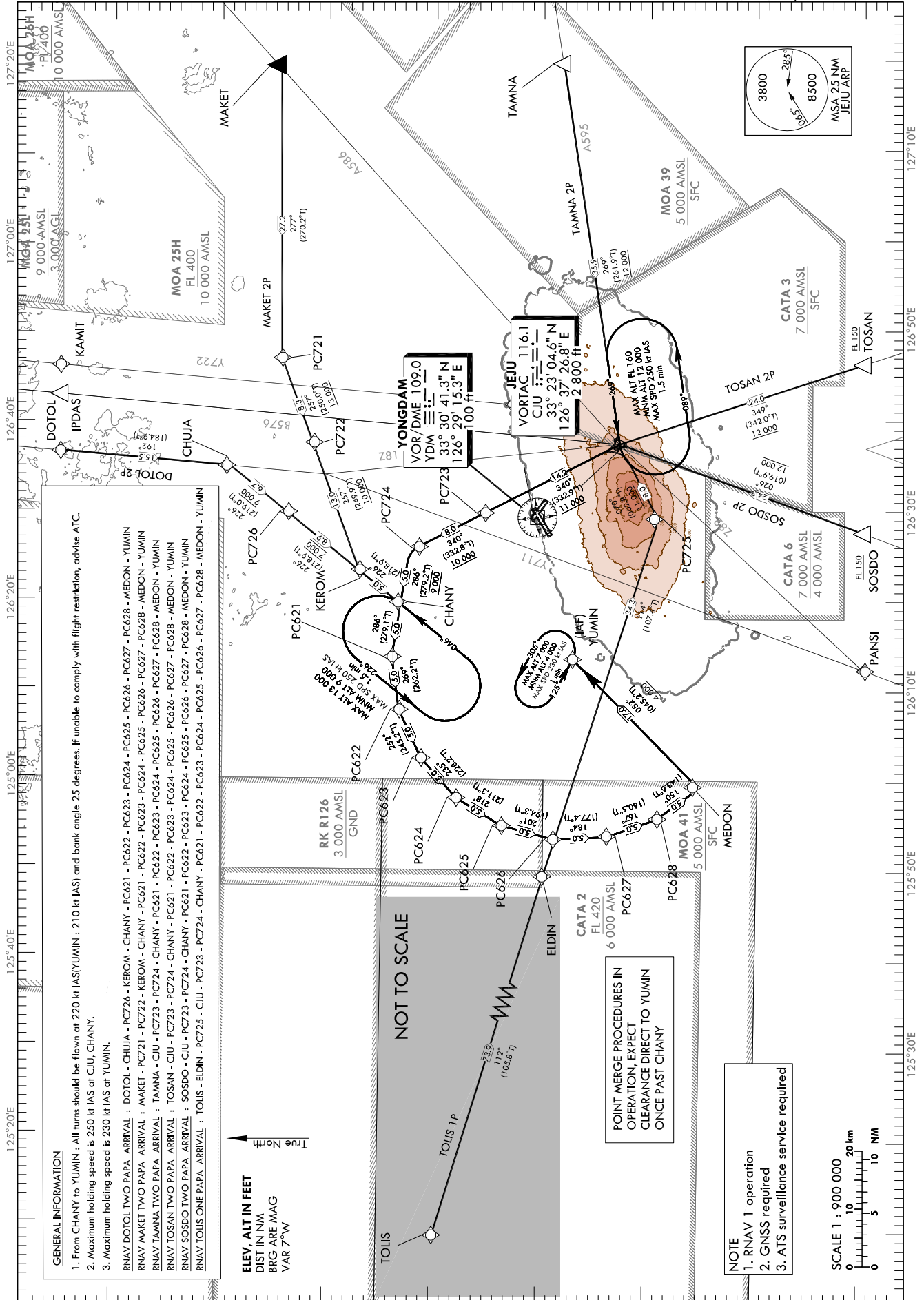
TRANSITION ALT 14 000
TRANSITION LVL FL 140

JEJU APP 121.2
JEJU TWR 124.05
118.1
118.125

JEJU/Jeju Intl(RKPC)

RWY 07
RNAV DOTOL 2P, RNAV MAKET 2P
RNAV TAMNA 2P, RNAV TOSAN 2P
RNAV SOSDO 2P, RNAV TOLIS 1P

Note : Arrival under ICAO Flight Procedures.



Change : Addition of information(MOA, FIX, Airspace).

Standard Instrument Arrival Procedure Coding Tables

RNAV DOTOL 2P

Serial Number	Path Descriptor	Waypoint Identifier	Fly over	Course/Track °M(T)	Distance (NM)	Turn direction	Altitude (ft)	Speed (kt)	Coordinates	VPA/TCH	Navigation specification	Remarks
001	IF	DOTOL	-	-	-	-	-	-	341515.4 N 1263636.6 E	-	RNAV 1	-
002	TF	CHUJA	-	192(184.9)	15.5	-	-	-	335947.3 N 1263500.2 E	-	RNAV 1	-
003	TF	PC726	-	226(219.0)	6.7	-	-9 000	-	335432.2 N 1262954.4 E	-	RNAV 1	-
004	TF	KEROM	-	226(218.9)	8.9	-	@7 000	-	334733.9 N 1262309.8 E	-	RNAV 1	-
005	TF	CHANY	-	226(218.9)	5.0	-	-	@220	334339.9 N 1261924.0 E	-	RNAV 1	-
006	TF	PC621	-	286(279.1)	5.0	-	-	@220	334427.4 N 1261328.9 E	-	RNAV 1	-
007	TF	PC622	-	269(262.2)	5.0	-	-	@220	334346.4 N 1260732.6 E	-	RNAV 1	-
008	TF	PC623	-	252(245.2)	5.0	-	-	@220	334140.2 N 1260206.2 E	-	RNAV 1	-
009	TF	PC624	-	235(228.2)	5.0	-	-	@220	333819.9 N 1255738.2 E	-	RNAV 1	-
010	TF	PC625	-	218(211.3)	5.0	-	-	@220	333403.1 N 1255431.8 E	-	RNAV 1	-
011	TF	PC626	-	201(194.3)	5.0	-	-	@220	332911.9 N 1255302.9 E	-	RNAV 1	-
012	TF	PC627	-	184(177.4)	5.0	-	-	@220	332411.7 N 1255319.1 E	-	RNAV 1	Bank angle 25°
013	TF	PC628	-	167(160.5)	5.0	-	-	@220	331928.4 N 1255518.5 E	-	RNAV 1	Bank angle 25°
014	TF	MEDON	-	150(143.6)	5.0	-	@7 000	@220	331526.4 N 1255850.7 E	-	RNAV 1	Bank angle 25°
015	TF	YUMIN	-	052(045.2)	17.0	-	+4 000	@210	332725.7 N 1261315.5 E	-	RNAV 1	IAF

RNAV MAKET 2P

Serial Number	Path Descriptor	Waypoint Identifier	Fly over	Course/Track °M(T)	Distance (NM)	Turn direction	Altitude (ft)	Speed (kt)	Coordinates	VPA/TCH	Navigation specification	Remarks
001	IF	MAKET	-	-	-	-	-	-	335452.4 N 1271953.0 E	-	RNAV 1	-
002	TF	PC721	-	277(270.2)	27.2	-	-	-	335453.3 N 1264709.7 E	-	RNAV 1	-
003	TF	PC722	-	257(250.0)	8.3	-	+13 000	-	335202.9 N 1263748.9 E	-	RNAV 1	-
004	TF	KEROM	-	257(249.9)	13.0	-	+10 000	-	334733.9 N 1262309.8 E	-	RNAV 1	-
005	TF	CHANY	-	226(218.9)	5.0	-	@9 000	@220	334339.9 N 1261924.0 E	-	RNAV 1	-
006	TF	PC621	-	286(279.1)	5.0	-	-	@220	334427.4 N 1261328.9 E	-	RNAV 1	-
007	TF	PC622	-	269(262.2)	5.0	-	-	@220	334346.4 N 1260732.6 E	-	RNAV 1	-
008	TF	PC623	-	252(245.2)	5.0	-	-	@220	334140.2 N 1260206.2 E	-	RNAV 1	-
009	TF	PC624	-	235(228.2)	5.0	-	-	@220	333819.9 N 1255738.2 E	-	RNAV 1	-
010	TF	PC625	-	218(211.3)	5.0	-	-	@220	333403.1 N 1255431.8 E	-	RNAV 1	-
011	TF	PC626	-	201(194.3)	5.0	-	-	@220	332911.9 N 1255302.9 E	-	RNAV 1	-
012	TF	PC627	-	184(177.4)	5.0	-	-	@220	332411.7 N 1255319.1 E	-	RNAV 1	Bank angle 25°
013	TF	PC628	-	167(160.5)	5.0	-	-	@220	331928.4 N 1255518.5 E	-	RNAV 1	Bank angle 25°
014	TF	MEDON	-	150(143.6)	5.0	-	@9 000	@220	331526.4 N 1255850.7 E	-	RNAV 1	Bank angle 25°
015	TF	YUMIN	-	052(045.2)	17.0	-	+4 000	@210	332725.7 N 1261315.5 E	-	RNAV 1	IAF

JEJU/Jeju Intl(RKPC)
RWY 07
RNAV TAMNA 2P, RNAV TOSAN 2P

AERONAUTICAL DATA TABULATION

AERONAUTICAL DATA TABULATION

Standard Instrument Arrival Procedure Coding Tables

RNAV TAMNA 2P

Serial Number	Path Descriptor	Waypoint Identifier	Fly-over	Course/Track °M(°T)	Distance (NM)	Turn direction	Altitude (ft)	Speed (kt)	Coordinates	VPA/TCH	Navigation specification	Remarks
001	IF	TAMNA	-	-	-	-	-	-	332815.5 N 1271953.0 E	-	RNAV 1	-
002	TF	CJU	-	269(261.9)	35.9	-	+12 000	-	332304.6 N 1263726.8 E	-	RNAV 1	-
003	TF	PC723	-	340(332.9)	14.2	-	+11 000	-	333544.3 N 1262941.9 E	-	RNAV 1	-
004	TF	PC724	-	340(332.8)	8.0	-	+10 000	-	334252.0 N 1262519.1 E	-	RNAV 1	-
005	TF	CHANY	-	286(279.2)	5.0	-	@9 000	@220	334339.9 N 1261924.0 E	-	RNAV 1	-
006	TF	PC621	-	286(279.1)	5.0	-	-	@220	334427.4 N 1261328.9 E	-	RNAV 1	-
007	TF	PC622	-	269(262.2)	5.0	-	-	@220	334346.4 N 1260732.6 E	-	RNAV 1	-
008	TF	PC623	-	252(245.2)	5.0	-	-	@220	334140.2 N 1260206.2 E	-	RNAV 1	-
009	TF	PC624	-	235(228.2)	5.0	-	-	@220	333819.9 N 1255738.2 E	-	RNAV 1	-
010	TF	PC625	-	218(211.3)	5.0	-	-	@220	333403.1 N 1255431.8 E	-	RNAV 1	-
011	TF	PC626	-	201(194.3)	5.0	-	-	@220	332911.9 N 1255302.9 E	-	RNAV 1	-
012	TF	PC627	-	184(177.4)	5.0	-	-	@220	332411.7 N 1255319.1 E	-	RNAV 1	Bank anlage 25°
013	TF	PC628	-	167(160.5)	5.0	-	-	@220	331928.4 N 1255518.5 E	-	RNAV 1	Bank anlage 25°
014	TF	MEDON	-	150(143.6)	5.0	-	@9 000	@220	331526.4 N 1255850.7 E	-	RNAV 1	Bank anlage 25°
015	TF	YUMIN	-	052(045.2)	17.0	-	+4 000	@210	332725.7 N 1261315.5 E	-	RNAV 1	IAF

RNAV TOSAN 2P

Serial Number	Path Descriptor	Waypoint Identifier	Fly-over	Course/Track °M(°T)	Distance (NM)	Turn direction	Altitude (ft)	Speed (kt)	Coordinates	VPA/TCH	Navigation specification	Remarks
001	IF	TOSAN	-	-	-	-	+FL 150	-	330012.0 N 1264618.7 E	-	RNAV 1	-
002	TF	CJU	-	349(342.0)	24.0	-	+12 000	-	332304.6 N 1263726.8 E	-	RNAV 1	-
003	TF	PC723	-	340(332.9)	14.2	-	+11 000	-	333544.3 N 1262941.9 E	-	RNAV 1	-
004	TF	PC724	-	340(332.8)	8.0	-	+10 000	-	334252.0 N 1262519.1 E	-	RNAV 1	-
005	TF	CHANY	-	286(279.2)	5.0	-	@9 000	@220	334339.9 N 1261924.0 E	-	RNAV 1	-
006	TF	PC621	-	286(279.1)	5.0	-	-	@220	334427.4 N 1261328.9 E	-	RNAV 1	-
007	TF	PC622	-	269(262.2)	5.0	-	-	@220	334346.4 N 1260732.6 E	-	RNAV 1	-
008	TF	PC623	-	252(245.2)	5.0	-	-	@220	334140.2 N 1260206.2 E	-	RNAV 1	-
009	TF	PC624	-	235(228.2)	5.0	-	-	@220	333819.9 N 1255738.2 E	-	RNAV 1	-
010	TF	PC625	-	218(211.3)	5.0	-	-	@220	333403.1 N 1255431.8 E	-	RNAV 1	-
011	TF	PC626	-	201(194.3)	5.0	-	-	@220	332911.9 N 1255302.9 E	-	RNAV 1	-
012	TF	PC627	-	184(177.4)	5.0	-	-	@220	332411.7 N 1255319.1 E	-	RNAV 1	Bank anlage 25°
013	TF	PC628	-	167(160.5)	5.0	-	-	@220	331928.4 N 1255518.5 E	-	RNAV 1	Bank anlage 25°
014	TF	MEDON	-	150(143.6)	5.0	-	@9 000	@220	331526.4 N 1255850.7 E	-	RNAV 1	Bank anlage 25°
015	TF	YUMIN	-	052(045.2)	17.0	-	+4 000	@210	332725.7 N 1261315.5 E	-	RNAV 1	IAF

Change : Information of DATA TABULATION

JEJU/Jeju Intl(RKPC)
RWY 07
RNAV SOSDO 2P, RNAV TOLIS 1P

AERONAUTICAL DATA TABULATION

Standard Instrument Arrival Procedure Coding Tables

Serial Number	Path Descriptor	Waypoint Identifier	Fly-over	Course/Track °(M°T)	Distance (NM)	Turn direction	Altitude (ft)	Speed (kt)	Coordinates	VPA/TCH	Navigation specification	Remarks
RNAV SOSDO 2P												
001	IF	SOSDO	-	-	-	-	+FL 150	-	330012.0 N 1262735.0 E	-	RNAV 1	-
002	TF	CJU	-	026(019.9)	24.3	-	+12 000	-	332304.6 N 1263726.8 E	-	RNAV 1	-
003	TF	PC723	-	340(332.9)	14.2	-	+11 000	-	333544.3 N 1262941.9 E	-	RNAV 1	-
004	TF	PC724	-	340(332.8)	8.0	-	+10 000	-	334252.0 N 1262519.1 E	-	RNAV 1	-
005	TF	CHANY	-	286(279.2)	5.0	-	@9 000	@220	334339.9 N 1261924.0 E	-	RNAV 1	-
006	TF	PC621	-	286(279.1)	5.0	-	-	@220	334427.4 N 1261328.9 E	-	RNAV 1	-
007	TF	PC622	-	269(262.2)	5.0	-	-	@220	334346.4 N 1260732.6 E	-	RNAV 1	-
008	TF	PC623	-	252(245.2)	5.0	-	-	@220	334140.2 N 1260206.2 E	-	RNAV 1	-
009	TF	PC624	-	235(228.2)	5.0	-	-	@220	333819.9 N 1255738.2 E	-	RNAV 1	-
010	TF	PC625	-	218(211.3)	5.0	-	-	@220	333403.1 N 1255431.8 E	-	RNAV 1	-
011	TF	PC626	-	201(194.3)	5.0	-	-	@220	332911.9 N 1255302.9 E	-	RNAV 1	-
012	TF	PC627	-	184(177.4)	5.0	-	-	@220	332411.7 N 1255319.1 E	-	RNAV 1	Bank anlg 25°
013	TF	PC628	-	167(160.5)	5.0	-	-	@220	331928.4 N 1255518.5 E	-	RNAV 1	Bank anlg 25°
014	TF	MEDON	-	150(143.6)	5.0	-	@9 000	@220	331526.4 N 1255850.7 E	-	RNAV 1	Bank anlg 25°
015	TF	YUMIN	-	052(045.2)	17.0	-	+4 000	@210	332725.7 N 1261315.5 E	-	RNAV 1	IAF

Serial Number	Path Descriptor	Waypoint Identifier	Fly-over	Course/Track °(M°T)	Distance (NM)	Turn direction	Altitude (ft)	Speed (kt)	Coordinates	VPA/TCH	Navigation specification	Remarks
RNAV TOLIS 1P												
001	IF	TOLIS	-	-	-	-	-	-	335030.0 N 1242452.6 E	-	RNAV 1	-
002	TF	ELDIN	-	112(105.8)	73.9	-	-	-	332947.6 N 1254953.1 E	-	RNAV 1	-
003	TF	PC725	-	114(107.4)	34.3	-	-	-	331925.2 N 1262856.9 E	-	RNAV 1	-
004	TF	CJU	-	070(062.8)	8.0	-	+11 000	-	332304.6 N 1263726.8 E	-	RNAV 1	-
005	TF	PC723	-	340(332.9)	14.2	-	+11 000	-	333544.3 N 1262941.9 E	-	RNAV 1	-
006	TF	PC724	-	340(332.8)	8.0	-	+10 000	-	334252.0 N 1262519.1 E	-	RNAV 1	-
007	TF	CHANY	-	286(279.2)	5.0	-	@9 000	@220	334339.9 N 1261924.0 E	-	RNAV 1	-
008	TF	PC621	-	286(279.1)	5.0	-	-	@220	334427.4 N 1261328.9 E	-	RNAV 1	-
009	TF	PC622	-	269(262.2)	5.0	-	-	@220	334346.4 N 1260732.6 E	-	RNAV 1	-
010	TF	PC623	-	252(245.2)	5.0	-	-	@220	334140.2 N 1260206.2 E	-	RNAV 1	-
011	TF	PC624	-	235(228.2)	5.0	-	-	@220	333819.9 N 1255738.2 E	-	RNAV 1	-
012	TF	PC625	-	218(211.3)	5.0	-	-	@220	333403.1 N 1255431.8 E	-	RNAV 1	-
013	TF	PC626	-	201(194.3)	5.0	-	-	@220	332911.9 N 1255302.9 E	-	RNAV 1	-
014	TF	PC627	-	184(177.4)	5.0	-	-	@220	332411.7 N 1255319.1 E	-	RNAV 1	Bank anlg 25°
015	TF	PC628	-	167(160.5)	5.0	-	-	@220	331928.4 N 1255518.5 E	-	RNAV 1	Bank anlg 25°
016	TF	MEDON	-	150(143.6)	5.0	-	@9 000	@220	331526.4 N 1255850.7 E	-	RNAV 1	Bank anlg 25°
017	TF	YUMIN	-	052(045.2)	17.0	-	+4 000	@210	332725.7 N 1261315.5 E	-	RNAV 1	IAF

Change : Information of DATA TABULATION

AERONAUTICAL DATA TABULATION

Standard Instrument Arrival Procedure Coding Tables

HOLDING PROCEDURE		Path Descriptor	Waypoint Identifier	Fly- over	Course/Track °M(°T)	Time (min)	Turn direction	Altitude (ft)	Speed (kt)	Coordinates	VPA/ TCH	Navigation specification	Remarks
RNAV DOTOL 2P	HM	CHANY	Y	046(038.9)	1.5	L	-13 000 +9 000	-250	334339.9 N 1261924.0 E	-	RNAV 1	-	
	HM	YUMIN	Y	125(118.3)	1.0	L	-7 000 +4 000	-230	332725.7 N 1261315.5 E	-	RNAV 1	-	
RNAV MAKET 2P	HM	CHANY	Y	046(038.9)	1.5	L	-13 000 +9 000	-250	334339.9 N 1261924.0 E	-	RNAV 1	-	
	HM	YUMIN	Y	125(118.3)	1.0	L	-7 000 +4 000	-230	332725.7 N 1261315.5 E	-	RNAV 1	-	
RNAV TAMNA 2P	HM	CJU	Y	269(261.9)	1.5	L	-FL 160 +12 000	-250	332304.6 N 1263726.8 E	-	RNAV 1	-	
	HM	CHANY	Y	046(038.9)	1.5	L	-13 000 +9 000	-250	334339.9 N 1261924.0 E	-	RNAV 1	-	
RNAV TOSAN 2P	HM	YUMIN	Y	125(118.3)	1.0	L	-7 000 +4 000	-230	332725.7 N 1261315.5 E	-	RNAV 1	-	
	HM	CJU	Y	269(261.9)	1.5	L	-FL 160 +12 000	-250	332304.6 N 1263726.8 E	-	RNAV 1	-	
RNAV SOSDO 2P	HM	CHANY	Y	046(038.9)	1.5	L	-13 000 +9 000	-250	334339.9 N 1261924.0 E	-	RNAV 1	-	
	HM	YUMIN	Y	125(118.3)	1.0	L	-7 000 +4 000	-230	332725.7 N 1261315.5 E	-	RNAV 1	-	
RNAV TOLIS 1P	HM	CJU	Y	269(261.9)	1.5	L	-FL 160 +12 000	-250	332304.6 N 1263726.8 E	-	RNAV 1	-	
	HM	CHANY	Y	046(038.9)	1.5	L	-13 000 +9 000	-250	334339.9 N 1261924.0 E	-	RNAV 1	-	
	HM	YUMIN	Y	125(118.3)	1.0	L	-7 000 +4 000	-230	332725.7 N 1261315.5 E	-	RNAV 1	-	

INTENTIONALLY

LEFT

BLANK

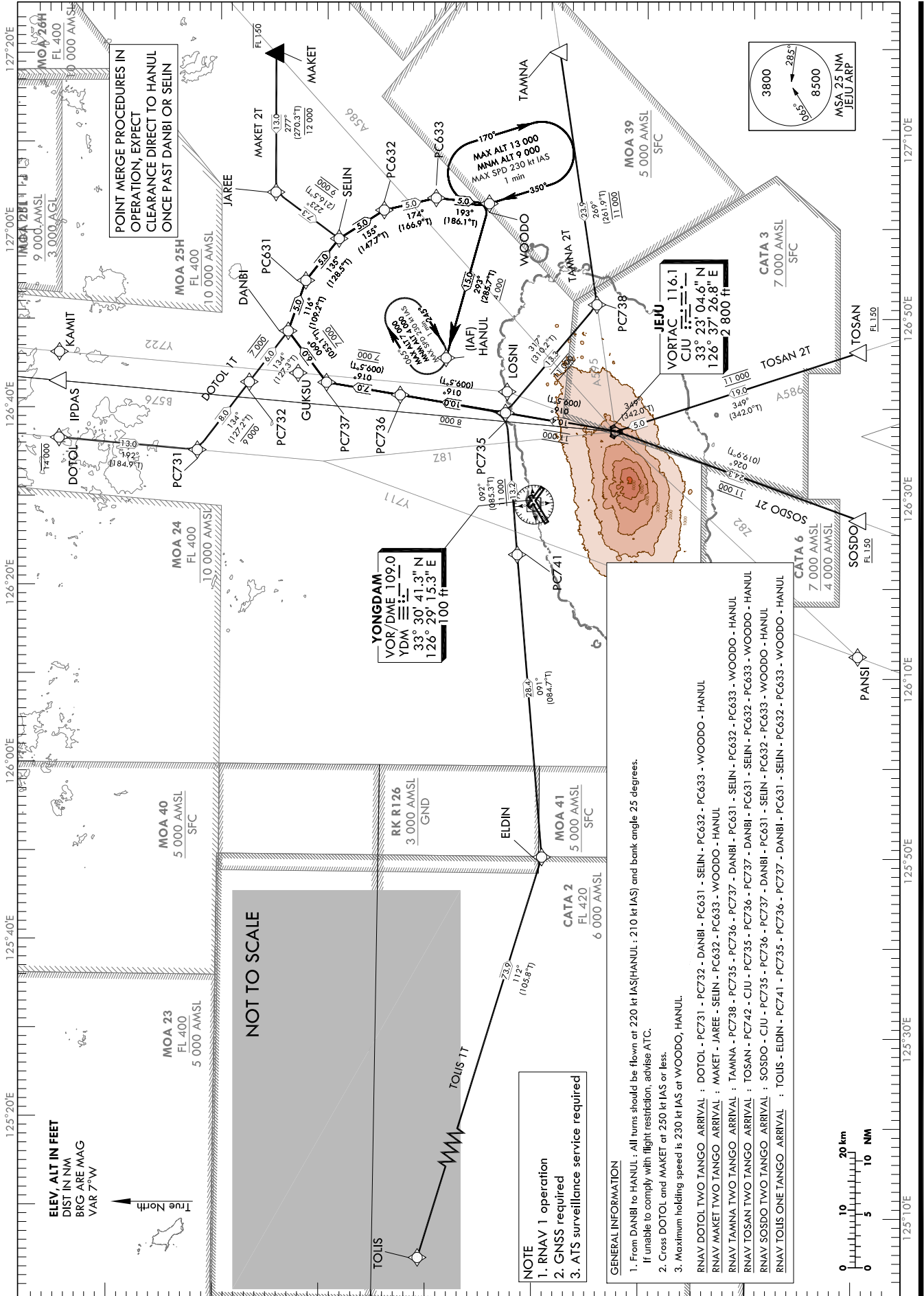
STANDARD ARRIVAL CHART
INSTRUMENT(STAR) - ICAO

TRANSITION ALT 14 000
TRANSITION LVL FL 140

JEJU APP 121.2
124.05
JEJU TWR 118.1
118.125

JEJU/Jeju Intl(RKPC)
RWY 25
RNAV DOTOL 1T, RNAV MAKET 1T
RNAV TAMNA 1T, RNAV TOSAN 1T
RNAV SOSDO 1T, RNAV PALSA 2T

Note : Arrival under ICAO Flight Procedures.



POINT MERGE PROCEDURES IN OPERATION. EXPECT CLEARANCE DIRECT TO HANUL ONCE PAST DANBI OR SELIN

YONGDAM
VOR/DME 109.0
YDM
33° 30' 41.3" N
126° 29' 15.3" E
100 ft

GENERAL INFORMATION

- From DANBI to HANUL : All turns should be flown at 220 kt IAS (HANUL : 210 kt IAS) and bank angle 25 degrees. If unable to comply with flight restriction, advise ATC.
- Cross DOTOL and MAKET at 250 kt IAS or less.
- Maximum holding speed is 230 kt IAS at WOODO, HANUL.

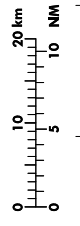
RNAV DOTOL TWO TANGO ARRIVAL : DOTOL - PC731 - PC732 - DANBI - SEIN - PC632 - PC633 - WOODO - HANUL
RNAV MAKET TWO TANGO ARRIVAL : MAKET - JAREE - SEIN - PC632 - PC633 - WOODO - HANUL
RNAV TAMNA TWO TANGO ARRIVAL : TAMNA - PC738 - PC735 - PC736 - PC737 - DANBI - PC631 - SEIN - PC632 - PC633 - WOODO - HANUL
RNAV TOSAN TWO TANGO ARRIVAL : TOSAN - PC742 - CIU - PC735 - PC736 - PC737 - DANBI - PC631 - SEIN - PC632 - PC633 - WOODO - HANUL
RNAV SOSDO TWO TANGO ARRIVAL : SOSDO - CIU - PC735 - PC736 - PC737 - DANBI - PC631 - SEIN - PC632 - PC633 - WOODO - HANUL
RNAV TOSAN ONE TANGO ARRIVAL : TOSAN - ELDIN - PC741 - PC735 - PC736 - PC737 - DANBI - PC631 - SEIN - PC632 - PC633 - WOODO - HANUL

NOTE

- RNAV 1 operation
- GNSS required
- ATS surveillance service required

ELEV. ALT IN FEET
DIST IN NM
BRG ARE MAG
VAR 7°W

True North



Change : Addition of information(MOA, FIX, Airspace).

JEJU/Jeju Intl(RKPC)
RWY 25
RNAV DOTOL 1T, RNAV MAKET 1T

AERONAUTICAL DATA TABULATION

Standard Instrument Arrival Procedure Coding Tables

RNAV DOTOL 2T

Serial Number	Path Descriptor	Waypoint Identifier	Fly-over	Course/Track °M(°T)	Distance (NM)	Turn direction	Altitude (ft)	Speed (kt)	Coordinates	VPA/TCH	Navigation specification	Remarks
001	IF	DOTOL	-	-	-	-	-14 000	-250	341515.4 N 1263636.6 E	-	RNAV 1	-
002	TF	PC731	-	192(184.9)	13.0	-	-	-	340217.0 N 1263515.7 E	-	RNAV 1	-
003	TF	PC732	-	134(127.2)	8.0	-	-9 000	-	335726.0 N 1264255.3 E	-	RNAV 1	-
004	TF	DANBI	-	134(127.3)	6.0	-	@7 000	@220	335347.5 N 1264839.5 E	-	RNAV 1	-
005	TF	PC631	-	116(109.2)	5.0	-	-	@220	335208.3 N 1265419.7 E	-	RNAV 1	-
006	TF	SELIN	-	135(128.5)	5.0	-	-	@220	334901.2 N 1265901.5 E	-	RNAV 1	-
007	TF	PC632	-	155(147.7)	5.0	-	-	@220	334447.1 N 1270213.7 E	-	RNAV 1	Bank angle 25°
008	TF	PC633	-	174(166.9)	5.0	-	-	@220	333954.3 N 1270335.0 E	-	RNAV 1	Bank angle 25°
009	TF	WOODO	-	193(186.1)	5.0	-	@7 000	@220	333455.5 N 1270256.6 E	-	RNAV 1	-
010	TF	HANUL	-	293(285.7)	15.0	-	+4 000	@210	333858.6 N 1264538.8 E	-	RNAV 1	IAF

RNAV MAKET 2T

Serial Number	Path Descriptor	Waypoint Identifier	Fly-over	Course/Track °M(°T)	Distance (NM)	Turn direction	Altitude (ft)	Speed (kt)	Coordinates	VPA/TCH	Navigation specification	Remarks
001	IF	MAKET	-	-	-	-	-FL 150	-250	335452.4 N 1271953.0 E	-	RNAV 1	-
002	TF	JAREE	-	277(270.3)	13.0	-	-12 000	-	335456.0 N 1270415.7 E	-	RNAV 1	-
003	TF	SELIN	-	223(216.5)	7.3	-	@9 000	@220	334901.2 N 1265901.5 E	-	RNAV 1	-
004	TF	PC632	-	155(147.7)	5.0	-	-	@220	334447.1 N 1270213.7 E	-	RNAV 1	Bank angle 25°
005	TF	PC633	-	174(166.9)	5.0	-	-	@220	333954.3 N 1270335.0 E	-	RNAV 1	Bank angle 25°
006	TF	WOODO	-	193(186.1)	5.0	-	@9 000	@220	333455.5 N 1270256.6 E	-	RNAV 1	-
007	TF	HANUL	-	293(285.7)	15.0	-	+4 000	@210	333858.6 N 1264538.8 E	-	RNAV 1	IAF

JEJU/Jeju Intl(RKPC)
RWY 25
RNAV TAMNA 2T, RNAV TOSAN 2T

AERONAUTICAL DATA TABULATION

Standard Instrument Arrival Procedure Coding Tables												
RNAV TAMNA 2T												
Serial Number	Path Descriptor	Waypoint Identifier	Fly-over	Course/Track °M(°T)	Distance (NM)	Turn direction	Altitude (ft)	Speed (kt)	Coordinates	VPA/TCH	Navigation specification	Remarks
001	IF	TAMNA	-	-	-	-	-	-	332815.5 N 1271953.0 E	-	RNAV 1	-
002	TF	PC738	-	269(261.9)	23.9	-	@11 000	-	332450.2 N 1265137.6 E	-	RNAV 1	-
003	TF	PC735	-	317(310.2)	13.3	-	@11 000	-	333323.5 N 1263930.8 E	-	RNAV 1	-
004	TF	PC736	-	016(009.5)	10.0	-	-9 000	-	334316.3 N 1264129.9 E	-	RNAV 1	-
005	TF	PC737	-	016(009.5)	7.0	-	@7 000	-	335011.3 N 1264253.5 E	-	RNAV 1	-
006	TF	DANBI	-	060(053.1)	6.0	-	-	@220	335347.5 N 1264839.5 E	-	RNAV 1	-
007	TF	PC631	-	116(109.2)	5.0	-	-	@220	335208.3 N 1265419.7 E	-	RNAV 1	-
008	TF	SELIN	-	135(128.5)	5.0	-	-	@220	334901.2 N 1265901.5 E	-	RNAV 1	-
009	TF	PC632	-	155(147.7)	5.0	-	-	@220	334447.1 N 1270213.7 E	-	RNAV 1	Bank anlgc 25°
010	TF	PC633	-	174(166.9)	5.0	-	-	@220	333954.3 N 1270335.0 E	-	RNAV 1	Bank anlgc 25°
011	TF	WOODO	-	193(186.1)	5.0	-	@7 000	@220	333455.5 N 1270256.6 E	-	RNAV 1	-
012	TF	HANUL	-	293(285.7)	15.0	-	+4 000	@210	333858.6 N 1264538.8 E	-	RNAV 1	IAF

RNAV TOSAN 2T												
Serial Number	Path Descriptor	Waypoint Identifier	Fly-over	Course/Track °M(°T)	Distance (NM)	Turn direction	Altitude (ft)	Speed (kt)	Coordinates	VPA/TCH	Navigation specification	Remarks
001	IF	TOSAN	-	-	-	-	+ FL 150	-	330012.0 N 1264618.7 E	-	RNAV 1	-
002	TF	PC742	-	349(342.0)	19.0	-	@11 000	-	331816.6 N 1263918.8 E	-	RNAV 1	-
003	TF	CJU	-	349(342.0)	5.0	-	-	-	332304.6 N 1263726.8 E	-	RNAV 1	-
004	TF	PC735	-	016(009.5)	10.4	-	@11 000	-	333323.5 N 1263930.8 E	-	RNAV 1	-
005	TF	PC736	-	016(009.5)	10.0	-	-9 000	-	334316.3 N 1264129.9 E	-	RNAV 1	-
006	TF	PC737	-	016(009.5)	7.0	-	@7 000	-	335011.3 N 1264253.5 E	-	RNAV 1	-
007	TF	DANBI	-	060(053.1)	6.0	-	-	@220	335347.5 N 1264839.5 E	-	RNAV 1	-
008	TF	PC631	-	116(109.2)	5.0	-	-	@220	335208.3 N 1265419.7 E	-	RNAV 1	-
009	TF	SELIN	-	135(128.5)	5.0	-	-	@220	334901.2 N 1265901.5 E	-	RNAV 1	-
010	TF	PC632	-	155(147.7)	5.0	-	-	@220	334447.1 N 1270213.7 E	-	RNAV 1	Bank anlgc 25°
011	TF	PC633	-	174(166.9)	5.0	-	-	@220	333954.3 N 1270335.0 E	-	RNAV 1	Bank anlgc 25°
012	TF	WOODO	-	193(186.1)	5.0	-	@7 000	@220	333455.5 N 1270256.6 E	-	RNAV 1	-
013	TF	HANUL	-	293(285.7)	15.0	-	+4 000	@210	333858.6 N 1264538.8 E	-	RNAV 1	IAF

Change : Information of DATA TABULATION

JEJU/Jeju Intl(RKPC)
RWY 25
RNAV SOSDO 2T, RNAV TOLIS 1T

AERONAUTICAL DATA TABULATION

Standard Instrument Arrival Procedure Coding Tables

Serial Number	Path Descriptor	Waypoint Identifier	Fly-over	Course/Track °M(°T)	Distance (NM)	Turn direction	Altitude (ft)	Speed (kt)	Coordinates	VPA/TCH	Navigation specification	Remarks
001	IF	SOSDO	-	-	-	-	+FL 150	-	330012.0 N 1262735.0 E	-	RNAV 1	-
002	TF	CJU	-	026(019.9)	24.3	-	@11 000	-	332304.6 N 1263726.8 E	-	RNAV 1	-
003	TF	PC735	-	016(009.5)	10.4	-	@11 000	-	333323.5 N 1263930.8 E	-	RNAV 1	-
004	TF	PC736	-	016(009.5)	10.0	-	-9 000	-	334316.3 N 1264129.9 E	-	RNAV 1	-
005	TF	PC737	-	016(009.5)	7.0	-	@7 000	-	335011.3 N 1264253.5 E	-	RNAV 1	-
006	TF	DANBI	-	060(053.1)	6.0	-	-	@220	335347.5 N 1264839.5 E	-	RNAV 1	-
007	TF	PC631	-	116(109.2)	5.0	-	-	@220	335208.3 N 1265419.7 E	-	RNAV 1	-
008	TF	SELIN	-	135(128.5)	5.0	-	-	@220	334901.2 N 1265901.5 E	-	RNAV 1	-
009	TF	PC632	-	155(147.7)	5.0	-	-	@220	334447.1 N 1270213.7 E	-	RNAV 1	Bank angle 25°
010	TF	PC633	-	174(166.9)	5.0	-	-	@220	333954.3 N 1270335.0 E	-	RNAV 1	Bank angle 25°
011	TF	WOODO	-	193(186.1)	5.0	-	@7 000	@220	333455.5 N 1270256.6 E	-	RNAV 1	-
012	TF	HANUL	-	293(285.7)	15.0	-	+4 000	@210	333858.6 N 1264538.8 E	-	RNAV 1	IAF

Serial Number	Path Descriptor	Waypoint Identifier	Fly-over	Course/Track °M(°T)	Distance (NM)	Turn direction	Altitude (ft)	Speed (kt)	Coordinates	VPA/TCH	Navigation specification	Remarks
001	IF	TOLIS	-	-	-	-	-	-	335030.0 N 1242452.6 E	-	RNAV 1	-
002	TF	ELDIN	-	112(105.8)	73.9	-	-	-	332947.6 N 1254953.1 E	-	RNAV 1	-
003	TF	PC741	-	091(084.7)	28.4	-	-	-	333219.6 N 1262342.6 E	-	RNAV 1	-
004	TF	PC735	-	092(085.3)	13.2	-	+11 000	-	333323.5 N 1263930.8 E	-	RNAV 1	-
005	TF	PC736	-	016(009.5)	10.0	-	-9 000	-	334316.3 N 1264129.9 E	-	RNAV 1	-
006	TF	PC737	-	016(009.5)	7.0	-	@7 000	-	335011.3 N 1264253.5 E	-	RNAV 1	-
007	TF	DANBI	-	060(053.1)	6.0	-	-	@220	335347.5 N 1264839.5 E	-	RNAV 1	-
008	TF	PC631	-	116(109.2)	5.0	-	-	@220	335208.3 N 1265419.7 E	-	RNAV 1	-
009	TF	SELIN	-	135(128.5)	5.0	-	-	@220	334901.2 N 1265901.5 E	-	RNAV 1	-
010	TF	PC632	-	155(147.7)	5.0	-	-	@220	334447.1 N 1270213.7 E	-	RNAV 1	Bank angle 25°
011	TF	PC633	-	174(166.9)	5.0	-	-	@220	333954.3 N 1270335.0 E	-	RNAV 1	Bank angle 25°
012	TF	WOODO	-	193(186.1)	5.0	-	@7 000	@220	333455.5 N 1270256.6 E	-	RNAV 1	-
013	TF	HANUL	-	293(285.7)	15.0	-	+4 000	@210	333858.6 N 1264538.8 E	-	RNAV 1	IAF

Change : Information of DATA TABULATION

JEJU/Jeju Intl(RKPC)
RWY 25
HOLDING PROCEDURE

AERONAUTICAL DATA TABULATION

Standard Instrument Arrival Procedure Coding Tables

HOLDING PROCEDURE		Path Descriptor	Waypoint Identifier	Fly- over	Course/Track °M(°T)	Time (min)	Turn direction	Altitude (ft)	Speed (kt)	Coordinates	VPA/ TCH	Navigation specification	Remarks
RNAV DOTOL 2T	HM	WOODO	Y	350(342.8)	1.0	R	-FL 160 +9 000	-230	333455.5 N 1270256.6 E	-	RNAV 1	-	
	HM	HANUL	Y	245(238.6)	1.0	R	-7 000 +4 000	-230	333858.6 N 1264538.8 E	-	RNAV 1	-	
RNAV MAKET 2T	HM	WOODO	Y	350(342.8)	1.0	R	-FL 160 +9 000	-230	333455.5 N 1270256.6 E	-	RNAV 1	-	
	HM	HANUL	Y	245(238.6)	1.0	R	-7 000 +4 000	-230	333858.6 N 1264538.8 E	-	RNAV 1	-	
RNAV TAMINA 2T	HM	WOODO	Y	350(342.8)	1.0	R	-FL 160 +9 000	-230	333455.5 N 1270256.6 E	-	RNAV 1	-	
	HM	HANUL	Y	245(238.6)	1.0	R	-7 000 +4 000	-230	333858.6 N 1264538.8 E	-	RNAV 1	-	
RNAV TOSAN 2T	HM	WOODO	Y	350(342.8)	1.0	R	-FL 160 +9 000	-230	333455.5 N 1270256.6 E	-	RNAV 1	-	
	HM	HANUL	Y	245(238.6)	1.0	R	-7 000 +4 000	-230	333858.6 N 1264538.8 E	-	RNAV 1	-	
RNAV SOSDO 2T	HM	WOODO	Y	350(342.8)	1.0	R	-FL 160 +9 000	-230	333455.5 N 1270256.6 E	-	RNAV 1	-	
	HM	HANUL	Y	245(238.6)	1.0	R	-7 000 +4 000	-230	333858.6 N 1264538.8 E	-	RNAV 1	-	
RNAV TOLIS 1T	HM	WOODO	Y	350(342.8)	1.0	R	-FL 160 +9 000	-230	333455.5 N 1270256.6 E	-	RNAV 1	-	
	HM	HANUL	Y	245(238.6)	1.0	R	-7 000 +4 000	-230	333858.6 N 1264538.8 E	-	RNAV 1	-	

Change : Information of DATA TABULATION